



# News Release / Communiqué

## The Canadian Real Estate Association L'Association canadienne de l'immeuble

### Resale housing market solid in December

**OTTAWA – January 14th, 2011** – National resale housing activity in December 2010 was slightly above average for the month of December, according to statistics released today by The Canadian Real Estate Association (CREA).

Actual (not seasonally adjusted) national sales activity via the Multiple Listing Service® (MLS®) Systems of Canadian real estate Boards was down 14.4 per cent on a year-over-year basis in December 2010, which reflects record level sales for the month of December in 2009. Activity in December 2010 ran slightly ahead of the ten year average for the month (Exhibit 1).

The national trend for monthly sales remained stable in December, with seasonally adjusted sales activity having edged down by less than a percentage point from the previous month. Led by Calgary, Winnipeg, and Hamilton-Burlington, seasonally adjusted sales activity was up month-to-month in half of local markets. Toronto, Vancouver, and Montreal were among the markets that posted a small month-over-month decline in December.

“Overall sales activity has improved in recent months, but the upturn has been uneven among local markets,” said Georges Pahud, CREA President. “Housing market trends often differ due to a number of local factors, so buyers and sellers should consult their local REALTOR® to understand how trends are shaping up in their market.”

National home sales activity improved steadily over the second half of 2010, with seasonally adjusted sales up 18.3 per cent in December compared to the recent low reached in July. As a result, seasonally adjusted activity in the fourth quarter of 2010 rose 12.1 per cent from third quarter levels, and was up less than a percentage point compared to second quarter activity.

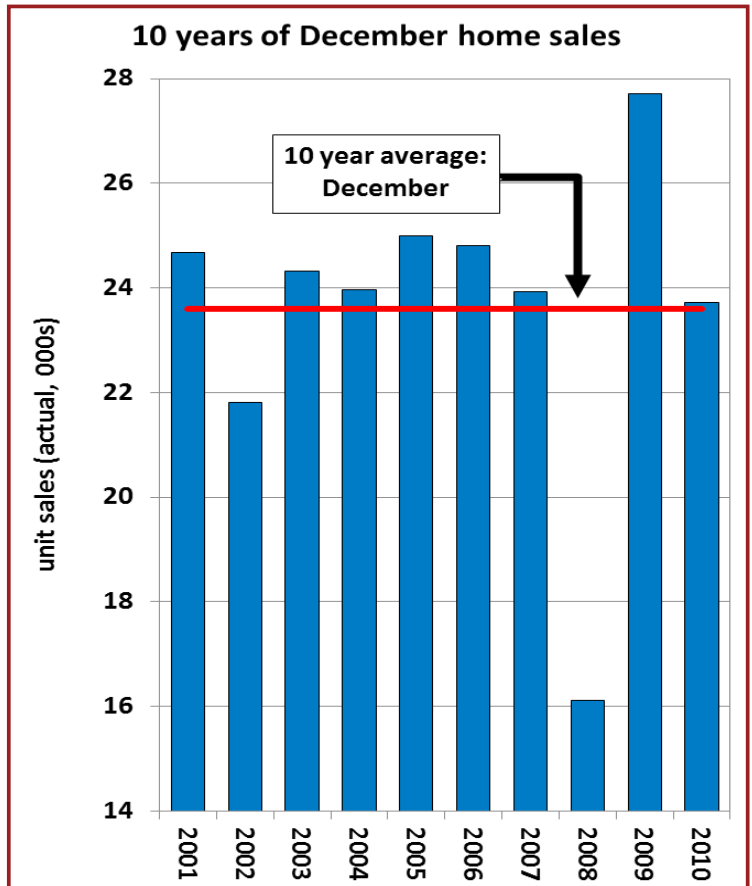
“The hand off to 2011 for sales activity in the fourth quarter suggests that the continuation of low interest rates will further support the housing market,” said Gregory Klump, CREA’s Chief Economist. “Sales may be starting to plateau in some of Canada’s most active and expensive housing markets. Combined with a pickup in new listings and further interest rate increases, the stage is being set for smaller price gains and a further deceleration in the growth of mortgage debt.”

Some 447,010 homes traded hands over Canadian MLS® Systems in 2010, down 3.9 per cent from 2009. Annual sales activity was higher than CREA had forecast previously due to stronger than projected sales activity in the fourth quarter.

The number of new residential listings on Canadian MLS® Systems held steady in December, rising by less than one percentage point on a seasonally adjusted basis. New listings remain 14.2 per cent below the recent peak reached in April 2010.

The housing market remained in balanced territory on a national basis in December, with sales as a percentage of new listings amounting to 55.2 per cent. Just over half of local markets in Canada were in balanced territory in December.

Exhibit 1†



† Data table available to media upon request, for purposes of reprinting only.



## News Release / Communiqué

### The Canadian Real Estate Association L'Association canadienne de l'immeuble

Three-quarters of the remaining local markets are sellers' markets. "With activity having returned to healthy levels and a firm floor under prices, many sellers who shied away from the market heading into the summer are expected to list their properties heading into the spring," said Klump. "Sales in the months ahead are not expected to continue trending upward as steeply as they have in recent months, so an increase in new listings may return many sellers markets to balanced territory."

The number of months of inventory represents the number of months it would take to sell current inventories at the current rate of sales activity, and can be used to gauge the balance between housing supply and demand. The seasonally adjusted number of months of inventory stood at 5.8 months at the end of December on a national basis. This was unchanged from November, and remains 1.4 months below where it was in July. The number of months of inventory in December rose compared to November levels in British Columbia, Saskatchewan, Quebec, New Brunswick and Nova Scotia, and was down from the previous month in Alberta, Manitoba, Ontario and Prince Edward Island.

The national average price for homes sold in December 2010 was \$344,551, up two per cent from the same month last year, and stable compared to average price in October and November. About 60 per cent of local markets recorded year-over-year gains in December. Average price was down on a year-over-year basis in 30 per cent of local markets, and remained stable in the remainder.

The annual average price for homes sold via Canadian MLS® Systems rose 5.8 per cent to \$339,030. Much of the increase reflects compositional factors within and across housing markets that caused average price to be skewed downward in 2009.

**PLEASE NOTE: The information contained in this news release combines both major market and national MLS® sales information from the previous month.**

**CREA cautions that average price information can be useful in establishing trends over time, but does not indicate actual prices in centres comprised of widely divergent neighborhoods or account for price differential between geographic areas. Statistical information contained in this report includes all housing types.**

MLS® is a co-operative marketing system used only by Canada's real estate Boards to ensure maximum exposure of properties listed for sale.

The Canadian Real Estate Association (CREA) is one of Canada's largest single-industry trade associations, representing more than 100,000 REALTORS® working through more than 100 real estate Boards and Associations.

Further information can be found at [http://www.crea.ca/public/news\\_stats/media.htm](http://www.crea.ca/public/news_stats/media.htm)

- 30 -

#### **For more information, please contact:**

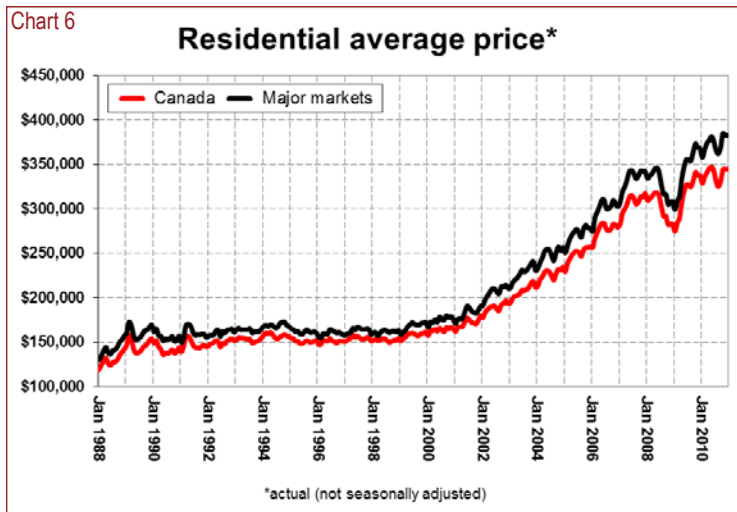
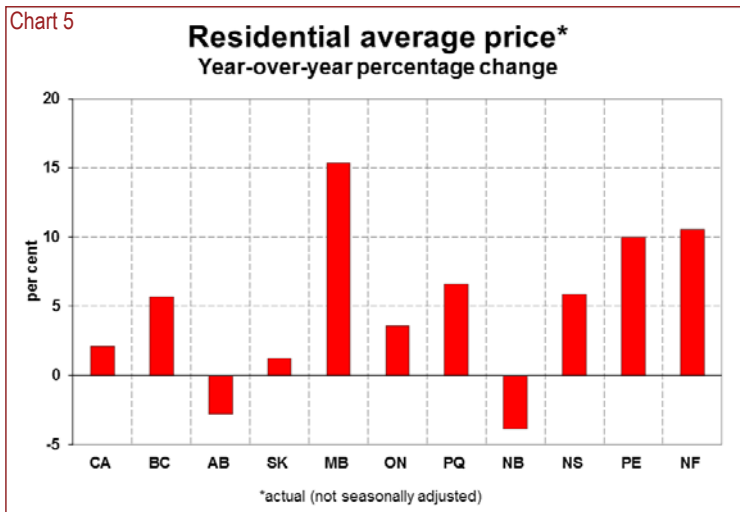
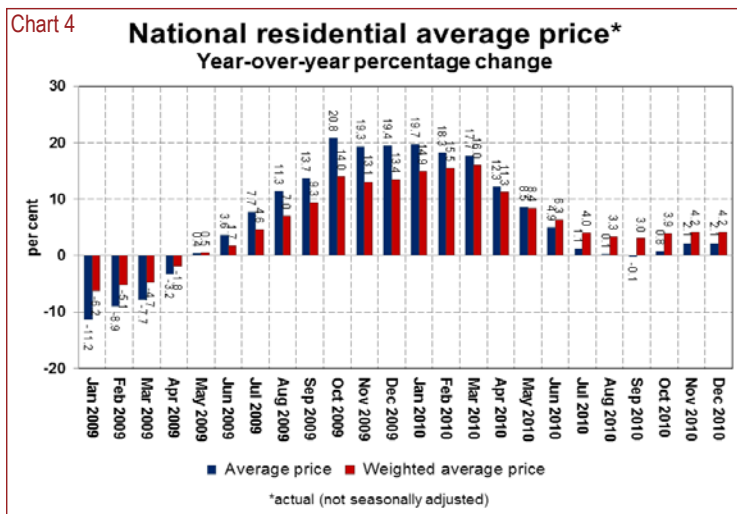
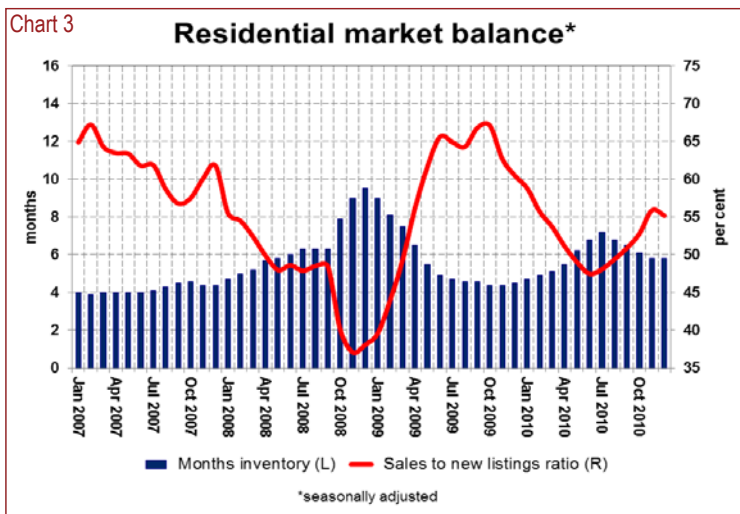
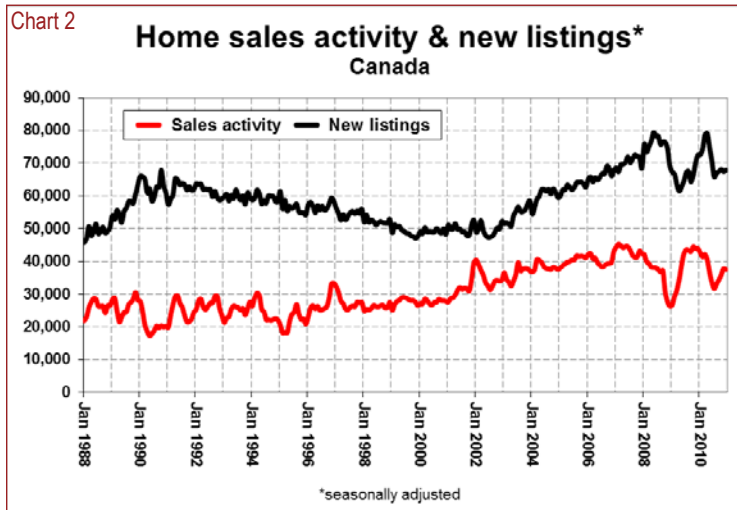
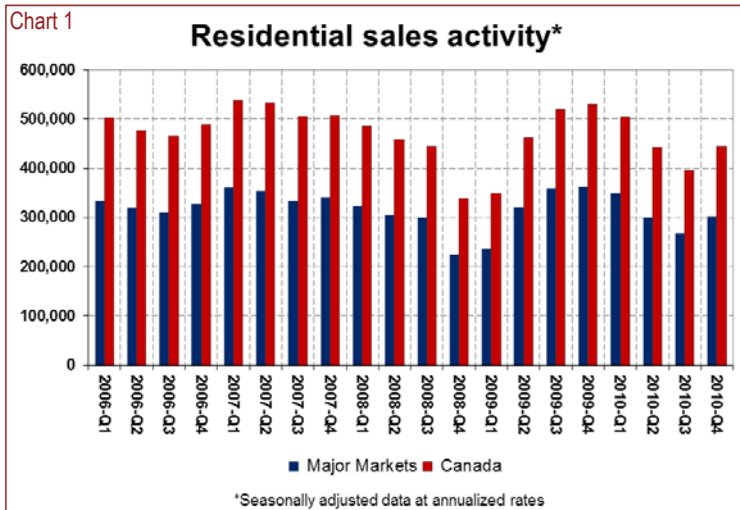
Pierre Leduc, Media relations  
The Canadian Real Estate Association  
P: 613-237-7111 or 613 884-1460  
E: [pleduc@crea.ca](mailto:pleduc@crea.ca)



# News Release / Communiqué

## The Canadian Real Estate Association

### L'Association canadienne de l'immeuble



**Dollar Volume over MLS® Systems of Select Canadian Real Estate Boards & Associations  
December 2010**

Dollar Volume*	Total <sup>1</sup>						Residential					
	s.a. <sup>2</sup>			nsa <sup>3</sup>			s.a. <sup>2</sup>			nsa <sup>3</sup>		
	Dec 2010	Nov 2010	monthly percentage change	Dec 2010	Dec 2009	year-over-year percentage change	Dec 2010	Nov 2010	monthly percentage change	Dec 2010	Dec 2009	year-over-year percentage change
Fraser Valley	555.6	567.5	-2.1	398.6	542.8	-26.6	530.7	550.2	-3.6	366.1	482.7	-24.2
Vancouver	1,934.5	2,035.4	-5.0	1,378.4	1,668.2	-17.4	1,901.4	1,985.5	-4.2	1,361.6	1,611.0	-15.5
Victoria	262.5	283.0	-7.3	168.7	228.9	-26.3	252.5	275.8	-8.4	161.0	218.3	-26.3
Calgary	815.0	734.9	10.9	519.4	594.1	-12.6	723.9	672.7	7.6	477.0	541.8	-12.0
Edmonton	524.8	541.7	-3.1	308.0	341.9	-9.9	455.7	467.8	-2.6	263.6	302.6	-12.9
Regina	82.5	84.5	-2.4	48.7	46.8	4.0	78.4	82.4	-4.8	46.8	46.4	0.9
Saskatoon	121.9	127.0	-4.0	74.1	76.8	-3.6	97.0	100.7	-3.6	56.8	61.5	-7.6
Winnipeg	265.2	238.2	11.3	153.1	125.3	22.2	258.7	232.0	11.5	146.6	119.3	22.9
Hamilton-Burlington	390.4	362.4	7.7	240.1	225.5	6.5	390.9	331.5	17.9	224.6	209.5	7.2
Kitchener-Waterloo	164.4	168.9	-2.7	115.0	102.5	12.1	186.2	160.8	15.8	107.1	96.2	11.4
London and St Thomas	165.0	171.9	-4.1	98.7	106.1	-6.9	151.5	174.2	-13.0	88.3	98.7	-10.6
Ottawa	408.9	424.3	-3.6	208.1	226.3	-8.0	405.3	419.7	-3.4	205.1	219.4	-6.5
St. Catharines	65.1	63.9	1.8	38.8	40.6	-4.6	60.0	66.3	-9.5	34.3	38.1	-9.8
Sudbury	50.1	45.7	9.7	28.6	24.6	16.5	47.0	44.3	6.1	27.1	22.7	19.7
Thunder Bay	29.6	27.4	7.9	17.5	17.8	-1.8	26.4	26.2	0.5	14.8	14.8	0.3
Toronto†	3,159.6	3,164.2	-0.1	1,906.1	2,282.5	-16.5	3,139.5	3,170.9	-1.0	1,906.1	2,282.5	-16.5
Windsor-Essex	71.3	76.6	-6.9	45.9	52.6	-12.6	61.7	66.8	-7.6	39.1	48.0	-18.5
Trois Rivières CMA	14.8	12.7	17.0	12.2	11.6	5.4	12.5	11.7	6.5	9.7	8.9	8.4
Montreal CMA	1,116.6	1,177.6	-5.2	811.2	870.5	-6.8	1,057.5	1,085.7	-2.6	747.1	797.8	-6.3
Gatineau CMA	89.4	83.1	7.5	52.6	52.0	1.2	80.0	75.2	6.3	44.6	48.9	-8.7
Quebec CMA	146.7	146.6	0.1	108.1	121.8	-11.2	140.7	140.2	0.4	102.0	108.8	-6.2
Saguenay CMA	23.0	22.7	1.6	13.8	12.5	10.4	20.5	21.0	-2.7	13.5	11.3	19.2
Saint John	24.7	22.9	7.8	14.5	19.5	-25.5	23.1	20.7	11.7	13.1	17.3	-24.2
Halifax-Dartmouth	145.2	138.9	4.5	80.8	78.6	2.9	140.4	134.7	4.2	77.6	75.1	3.2
Newfoundland & Labrador	79.3	74.9	5.8	81.2	97.1	-16.4	75.3	71.9	4.8	76.1	92.2	-17.4
<b>Canada</b>	<b>13,603.5</b>	<b>13,750.0</b>	<b>-1.1</b>	<b>8,715.0</b>	<b>9,990.7</b>	<b>-12.8</b>	<b>12,926.0</b>	<b>13,054.3</b>	<b>-1.0</b>	<b>8,171.0</b>	<b>9,352.4</b>	<b>-12.6</b>

\* in millions of dollars

† Detailed data for the Toronto Real Estate Board (TREB) market area can be found at [http://www.torontorealestateboard.com/consumer\\_info/market\\_news/index.htm](http://www.torontorealestateboard.com/consumer_info/market_news/index.htm)

<sup>1</sup> Total = Residential + Non-residential

<sup>2</sup> Seasonally adjusted

<sup>3</sup> Not seasonally adjusted

**Source:** The Canadian Real Estate Association

**Note:** Due to changes in local market boundaries and data collection in the province of Quebec, local market and provincial totals for Quebec and Canada after 2002 are not directly comparable with earlier years.

**Sales Activity over MLS® Systems of Select Canadian Real Estate Boards & Associations  
December 2010**

Sales Activity	Total <sup>1</sup>						Residential					
	s.a. <sup>2</sup>			nsa <sup>3</sup>			s.a. <sup>2</sup>			nsa <sup>3</sup>		
	Dec 2010	Nov 2010	monthly percentage change	Dec 2010	Dec 2009	year-over-year percentage change	Dec 2010	Nov 2010	monthly percentage change	Dec 2010	Dec 2009	year-over-year percentage change
Fraser Valley	1,220	1,210	0.8	895	1,260	-29.0	1,194	1,153	3.6	824	1,081	-23.8
Vancouver	2,717	2,900	-6.3	2,002	2,637	-24.1	2,695	2,825	-4.6	1,943	2,567	-24.3
Victoria	538	562	-4.3	349	453	-23.0	505	529	-4.5	324	418	-22.5
Calgary	2,017	1,792	12.6	1,303	1,454	-10.4	1,833	1,675	9.4	1,251	1,374	-9.0
Edmonton	1,619	1,606	0.8	946	1,066	-11.3	1,418	1,418	0.0	848	948	-10.5
Regina	312	307	1.6	196	194	1.0	298	296	0.7	186	192	-3.1
Saskatoon	396	434	-8.8	237	275	-13.8	303	323	-6.2	189	211	-10.4
Winnipeg	1,094	1,032	6.0	653	619	5.5	1,057	978	8.1	613	568	7.9
Hamilton-Burlington	1,177	1,118	5.3	722	779	-7.3	1,143	1,072	6.6	692	733	-5.6
Kitchener-Waterloo	591	582	1.5	373	400	-6.8	580	550	5.5	352	369	-4.6
London and St Thomas	731	747	-2.1	424	482	-12.0	682	704	-3.1	391	458	-14.6
Ottawa	1,272	1,290	-1.4	649	743	-12.7	1,248	1,263	-1.2	631	704	-10.4
St. Catharines	261	277	-5.8	153	178	-14.0	249	263	-5.3	145	168	-13.7
Sudbury	246	217	13.4	149	125	19.2	212	198	7.1	128	109	17.4
Thunder Bay	200	203	-1.5	124	139	-10.8	182	178	2.2	109	115	-5.2
Toronto <sup>†</sup>	7,073	7,256	-2.5	4,393	5,541	-20.7	7,089	7,277	-2.6	4,393	5,541	-20.7
Windsor-Essex	450	456	-1.3	295	338	-12.7	385	400	-3.8	256	312	-17.9
Trois Rivières CMA	89	83	7.2	67	80	-16.3	81	78	3.8	60	66	-9.1
Montreal CMA	3,660	3,736	-2.0	2,591	2,933	-11.7	3,478	3,593	-3.2	2,456	2,797	-12.2
Gatineau CMA	379	375	1.1	215	255	-15.7	348	348	0.0	196	238	-17.6
Quebec CMA	611	630	-3.0	443	547	-19.0	581	588	-1.2	420	510	-17.6
Saguenay CMA	140	136	2.9	88	84	4.8	122	126	-3.2	76	76	0.0
Saint John	148	141	5.0	91	112	-18.8	130	121	7.4	79	97	-18.6
Halifax-Dartmouth	547	554	-1.3	312	334	-6.6	497	511	-2.7	284	305	-6.9
Newfoundland & Labrador	332	337	-1.5	328	452	-27.4	302	300	0.7	298	399	-25.3
<b>Canada</b>	<b>40,232</b>	<b>40,405</b>	<b>-0.4</b>	<b>25,683</b>	<b>30,034</b>	<b>-14.5</b>	<b>37,452</b>	<b>37,697</b>	<b>-0.6</b>	<b>23,715</b>	<b>27,708</b>	<b>-14.4</b>

<sup>†</sup>Detailed data for the Toronto Real Estate Board (TREB) market area can be found at [http://www.torontorealestateboard.com/consumer\\_info/market\\_news/index.htm](http://www.torontorealestateboard.com/consumer_info/market_news/index.htm)

<sup>1</sup> Total = Residential + Non-residential

<sup>2</sup> Seasonally adjusted

<sup>3</sup> Not seasonally adjusted

**Source:** The Canadian Real Estate Association

**Note:** Due to changes in local market boundaries and data collection in the province of Quebec, local market and provincial totals for Quebec and Canada after 2002 are not directly comparable with earlier years.

**New Listings over MLS® Systems of Select Canadian Real Estate Boards & Associations  
December 2010**

New Listings	Total <sup>1</sup>						Residential					
	s.a. <sup>2</sup>			nsa <sup>3</sup>			s.a. <sup>2</sup>			nsa <sup>3</sup>		
	Dec 2010	Nov 2010	monthly percentage change	Dec 2010	Dec 2009	year-over-year percentage change	Dec 2010	Nov 2010	monthly percentage change	Dec 2010	Dec 2009	year-over-year percentage change
Fraser Valley	2,319	2,291	1.2	1,104	1,453	-24.0	2,189	2,055	6.5	952	1,192	-20.1
Vancouver	4,851	4,697	3.3	1,919	2,412	-20.4	4,617	4,440	4.0	1,768	2,225	-20.5
Victoria	1,283	1,081	18.7	522	480	8.7	1,139	965	18.0	441	408	8.1
Calgary	3,930	3,886	1.1	1,644	1,847	-11.0	3,480	3,463	0.5	1,459	1,640	-11.0
Edmonton	3,311	3,263	1.5	1,425	1,373	3.8	2,598	2,521	3.1	1,124	1,081	4.0
Regina	497	555	-10.5	227	285	-20.4	450	499	-9.8	206	262	-21.4
Saskatoon	963	884	8.9	409	349	17.2	657	574	14.5	274	212	29.2
Winnipeg	1,581	1,505	5.0	609	536	13.6	1,393	1,342	3.8	516	465	11.0
Hamilton-Burlington	1,962	2,076	-5.5	868	826	5.1	1,814	1,914	-5.2	768	710	8.2
Kitchener-Waterloo	951	1,020	-6.8	482	605	-20.3	836	865	-3.4	391	481	-18.7
London and St Thomas	1,527	1,493	2.3	704	816	-13.7	1,286	1,290	-0.3	555	655	-15.3
Ottawa	2,235	2,322	-3.7	857	754	13.7	2,114	2,196	-3.7	777	701	10.8
St. Catharines	510	535	-4.7	256	327	-21.7	450	456	-1.3	216	255	-15.3
Sudbury	430	443	-2.9	199	231	-13.9	362	360	0.6	165	179	-7.8
Thunder Bay	230	268	-14.2	109	162	-32.7	184	219	-16.0	84	129	-34.9
Toronto†	10,760	11,200	-3.9	4,285	5,506	-22.2	10,759	11,200	-3.9	4,285	5,506	-22.2
Windsor-Essex	976	984	-0.8	540	576	-6.3	818	789	3.7	437	456	-4.2
Trois Rivières CMA	177	163	8.6	132	110	20.0	142	150	-5.3	99	85	16.5
Montreal CMA	6,767	6,645	1.8	3,954	3,730	6.0	6,290	6,132	2.6	3,653	3,401	7.4
Gatineau CMA	568	633	-10.3	281	382	-26.4	561	567	-1.1	256	337	-24.0
Quebec CMA	1,033	1,037	-0.4	663	636	4.2	939	953	-1.5	575	537	7.1
Saguenay CMA	249	228	9.2	160	149	7.4	188	185	1.6	101	94	7.4
Saint John	354	532	-33.5	155	217	-28.6	254	319	-20.4	107	157	-31.8
Halifax-Dartmouth	1,257	958	31.2	532	353	50.7	1,122	824	36.2	449	311	44.4
Newfoundland & Labrador	961	891	7.9	433	291	48.8	778	700	11.1	351	240	46.3
<b>Canada</b>	<b>78,230</b>	<b>77,998</b>	<b>0.3</b>	<b>36,178</b>	<b>39,202</b>	<b>-7.7</b>	<b>67,849</b>	<b>67,441</b>	<b>0.6</b>	<b>30,486</b>	<b>33,100</b>	<b>-7.9</b>

† Detailed data for the Toronto Real Estate Board (TREB) market area can be found at [http://www.torontorealestateboard.com/consumer\\_info/market\\_news/index.htm](http://www.torontorealestateboard.com/consumer_info/market_news/index.htm)

<sup>1</sup> Total = Residential + Non-residential

<sup>2</sup> Seasonally adjusted

<sup>3</sup> Not seasonally adjusted

**Source:** The Canadian Real Estate Association

**Note:** Due to changes in local market boundaries and data collection in the province of Quebec, local market and provincial totals for Quebec and Canada after 2002 are not directly comparable with earlier years.

**Average Sale Price over MLS® Systems of Select Canadian Real Estate Boards & Associations  
December 2010**

Average Price*	Total <sup>1</sup>						Residential					
	s.a. <sup>2</sup>			nsa <sup>3</sup>			s.a. <sup>2</sup>			nsa <sup>3</sup>		
	Dec 2010	Nov 2010	monthly percentage change	Dec 2010	Dec 2009	year-over-year percentage change	Dec 2010	Nov 2010	monthly percentage change	Dec 2010	Dec 2009	year-over-year percentage change
Fraser Valley	455,443	469,036	-2.9	445,401	430,827	3.4	444,473	477,224	-6.9	444,258	446,546	-0.5
Vancouver	711,998	701,877	1.4	688,527	632,608	8.8	705,522	702,838	0.4	700,773	627,582	11.7
Victoria	487,840	503,569	-3.1	483,391	505,404	-4.4	500,073	521,379	-4.1	496,814	522,211	-4.9
Calgary	404,068	410,124	-1.5	398,633	408,586	-2.4	394,949	401,590	-1.7	381,308	394,300	-3.3
Edmonton	324,168	337,300	-3.9	325,546	320,709	1.5	321,361	329,911	-2.6	310,885	319,201	-2.6
Regina	264,338	275,127	-3.9	248,344	241,240	2.9	263,147	278,366	-5.5	251,690	241,644	4.2
Saskatoon	307,885	292,740	5.2	312,653	279,440	11.9	320,219	311,709	2.7	300,693	291,554	3.1
Winnipeg	242,409	230,787	5.0	234,384	202,416	15.8	244,795	237,220	3.2	239,183	209,963	13.9
Hamilton-Burlington	331,673	324,153	2.3	332,556	289,469	14.9	341,983	309,240	10.6	324,590	285,795	13.6
Kitchener-Waterloo	278,134	290,194	-4.2	308,254	256,322	20.3	320,957	292,333	9.8	304,174	260,583	16.7
London and St Thomas	225,657	230,175	-2.0	232,896	220,099	5.8	222,145	247,500	-10.2	225,880	215,582	4.8
Ottawa	321,448	328,888	-2.3	320,649	304,565	5.3	324,771	332,279	-2.3	325,031	311,604	4.3
St. Catharines	249,321	230,710	8.1	253,519	228,316	11.0	240,942	252,187	-4.5	236,789	226,698	4.5
Sudbury	203,530	210,417	-3.3	192,123	196,521	-2.2	221,591	223,645	-0.9	212,097	208,024	2.0
Thunder Bay	148,093	135,220	9.5	141,095	128,157	10.1	144,882	147,445	-1.7	136,029	128,513	5.8
Toronto <sup>1</sup>	446,708	436,085	2.4	433,887	411,931	5.3	442,863	435,740	1.6	433,887	411,931	5.3
Windsor-Essex	158,339	167,882	-5.7	155,689	155,496	0.1	160,172	166,913	-4.0	152,676	153,776	-0.7
Trois Rivières CMA	n/a	n/a	-	n/a	n/a	-	n/a	n/a	-	158,602	136,574	16.1
Montreal CMA	n/a	n/a	-	n/a	n/a	-	n/a	n/a	-	304,684	287,788	5.9
Gatineau CMA	n/a	n/a	-	n/a	n/a	-	n/a	n/a	-	230,627	208,349	10.7
Quebec CMA	n/a	n/a	-	n/a	n/a	-	n/a	n/a	-	249,964	216,752	15.3
Saguenay CMA	n/a	n/a	-	n/a	n/a	-	n/a	n/a	-	178,321	147,757	20.7
Saint John	166,946	162,558	2.7	159,216	173,690	-8.3	177,485	170,717	4.0	165,770	178,037	-6.9
Halifax-Dartmouth	265,494	250,789	5.9	259,080	235,257	10.1	282,437	263,590	7.2	273,182	246,380	10.9
Newfoundland & Labrador	238,835	222,393	7.4	247,616	214,844	15.3	249,499	239,570	4.1	255,517	231,107	10.6
<b>Canada</b>	<b>338,127</b>	<b>340,303</b>	<b>-0.6</b>	<b>339,329</b>	<b>332,647</b>	<b>2.0</b>	<b>345,135</b>	<b>346,294</b>	<b>-0.3</b>	<b>344,551</b>	<b>337,534</b>	<b>2.1</b>

\* Weighted average price for Quebec residential markets (provided by Québec Federation of Real Estate Boards).

Information on Quebec residential market weighted average price calculations can be found at: <http://www.fcij.ca/immobilier-economiste.php>

<sup>1</sup>Detailed data for the Toronto Real Estate Board (TREB) market area can be found at [http://www.torontorealestateboard.com/consumer\\_info/market\\_news/index.htm](http://www.torontorealestateboard.com/consumer_info/market_news/index.htm)

<sup>1</sup> Total = Residential + Non-residential

<sup>2</sup> Seasonally adjusted

<sup>3</sup> Not seasonally adjusted

**Source:** The Canadian Real Estate Association

**Note:** Due to changes in local market boundaries and data collection in the province of Quebec, local market and provincial totals for Quebec and Canada after 2002 are not directly comparable with earlier years.

**Sales as a Percentage of New Listings over MLS® Systems of Select Canadian Real Estate Boards & Associations  
December 2010**

Sales as a Percentage of New Listings	Total <sup>1</sup>						Residential					
	s.a. <sup>2</sup>			nsa <sup>3</sup>			s.a. <sup>2</sup>			nsa <sup>3</sup>		
	Dec 2010	Nov 2010	monthly change	Dec 2010	Dec 2009	year-over-year change	Dec 2010	Nov 2010	monthly change	Dec 2010	Dec 2009	year-over-year change
Fraser Valley	52.6	52.8	-0.2	81.1	86.7	-5.6	54.5	56.1	-1.6	86.6	90.7	-4.1
Vancouver	56.0	61.7	-5.7	104.3	109.3	-5.0	58.4	63.6	-5.2	109.9	115.4	-5.5
Victoria	41.9	52.0	-10.1	66.9	94.4	-27.5	44.3	54.8	-10.5	73.5	102.5	-29.0
Calgary	51.3	46.1	5.2	79.3	78.7	0.6	52.7	48.4	4.3	85.7	83.8	1.9
Edmonton	48.9	49.2	-0.3	66.4	77.6	-11.2	54.6	56.2	-1.6	75.4	87.7	-12.3
Regina	62.8	55.3	7.5	86.3	68.1	18.2	66.2	59.3	6.9	90.3	73.3	17.0
Saskatoon	41.1	49.1	-8.0	57.9	78.8	-20.9	46.1	56.3	-10.2	69.0	99.5	-30.5
Winnipeg	69.2	68.6	0.6	107.2	115.5	-8.3	75.9	72.9	3.0	118.8	122.2	-3.4
Hamilton-Burlington	60.0	53.9	6.1	83.2	94.3	-11.1	63.0	56.0	7.0	90.1	103.2	-13.1
Kitchener-Waterloo	62.1	57.1	5.0	77.4	66.1	11.3	69.4	63.6	5.8	90.0	76.7	13.3
London and St Thomas	47.9	50.0	-2.1	60.2	59.1	1.1	53.0	54.6	-1.6	70.5	69.9	0.6
Ottawa	56.9	55.6	1.3	75.7	98.5	-22.8	59.0	57.5	1.5	81.2	100.4	-19.2
St. Catharines	51.2	51.8	-0.6	59.8	54.4	5.4	55.3	57.7	-2.4	67.1	65.9	1.2
Sudbury	57.2	49.0	8.2	74.9	54.1	20.8	58.6	55.0	3.6	77.6	60.9	16.7
Thunder Bay	87.0	75.7	11.3	113.8	85.8	28.0	98.9	81.3	17.6	129.8	89.1	40.7
Toronto <sup>†</sup>	65.7	64.8	0.9	102.5	100.6	1.9	65.9	65.0	0.9	102.5	100.6	1.9
Windsor-Essex	46.1	46.3	-0.2	54.6	58.7	-4.1	47.1	50.7	-3.6	58.6	68.4	-9.8
Trois Rivières CMA	50.3	50.9	-0.6	50.8	72.7	-21.9	57.0	52.0	5.0	60.6	77.6	-17.0
Montreal CMA	54.1	56.2	-2.1	65.5	78.6	-13.1	55.3	58.6	-3.3	67.2	82.2	-15.0
Gatineau CMA	66.7	59.2	7.5	76.5	66.8	9.7	62.0	61.4	0.6	76.6	70.6	6.0
Quebec CMA	59.1	60.8	-1.7	66.8	86.0	-19.2	61.9	61.7	0.2	73.0	95.0	-22.0
Saguenay CMA	56.2	59.6	-3.4	55.0	56.4	-1.4	64.9	68.1	-3.2	75.2	80.9	-5.7
Saint John	41.8	26.5	15.3	58.7	51.6	7.1	51.2	37.9	13.3	73.8	61.8	12.0
Halifax-Dartmouth	43.5	57.8	-14.3	58.6	94.6	-36.0	44.3	62.0	-17.7	63.3	98.1	-34.8
Newfoundland & Labrador	34.5	37.8	-3.3	75.8	155.3	-79.5	38.8	42.9	-4.1	84.9	166.3	-81.4
<b>Canada</b>	<b>51.4</b>	<b>51.8</b>	<b>-0.4</b>	<b>71.0</b>	<b>76.6</b>	<b>-5.6</b>	<b>55.2</b>	<b>55.9</b>	<b>-0.7</b>	<b>77.8</b>	<b>83.7</b>	<b>-5.9</b>

<sup>†</sup>Detailed data for the Toronto Real Estate Board (TREB) market area can be found at [http://www.torontorealestateboard.com/consumer\\_info/market\\_news/index.htm](http://www.torontorealestateboard.com/consumer_info/market_news/index.htm)

<sup>1</sup> Total = Residential + Non-residential

<sup>2</sup> Seasonally adjusted

<sup>3</sup> Not seasonally adjusted

**Source:** The Canadian Real Estate Association



**Dollar Volume over MLS® Systems of Select Canadian Real Estate Boards & Associations**  
**Annual**

Dollar Volume*	Total <sup>1</sup>			Residential		
	2010	2009	percentage change	2010	2009	percentage change
Fraser Valley	6,662.8	7,007.8	-4.9	6,306.7	6,668.0	-5.4
Vancouver	21,466.6	21,780.3	-1.4	21,048.8	21,480.1	-2.0
Victoria	3,239.5	3,775.7	-14.2	3,112.6	3,647.2	-14.7
Calgary	9,120.0	10,347.9	-11.9	8,372.5	9,600.7	-12.8
Edmonton	6,202.4	6,988.0	-11.2	5,393.4	6,131.7	-12.0
Regina	962.2	943.1	2.0	924.0	904.1	2.2
Saskatoon	1,354.4	1,364.3	-0.7	1,059.0	1,069.3	-1.0
Winnipeg	2,731.9	2,468.8	10.7	2,646.6	2,386.3	10.9
Hamilton-Burlington	4,233.6	3,887.5	8.9	4,031.3	3,689.2	9.3
Kitchener-Waterloo	2,119.7	1,912.0	10.9	1,957.4	1,773.7	10.4
London and St Thomas	2,054.1	1,886.1	8.9	1,913.6	1,783.4	7.3
Ottawa	4,861.5	4,613.0	5.4	4,790.6	4,548.6	5.3
St. Catharines	753.4	674.8	11.6	697.9	633.0	10.3
Sudbury	532.4	425.4	25.2	497.5	397.3	25.2
Thunder Bay	335.9	306.5	9.6	309.1	281.8	9.7
Toronto <sup>†</sup>	38,131.7	35,358.7	7.8	38,131.7	35,358.7	7.8
Windsor-Essex	860.7	789.7	9.0	779.7	716.4	8.8
Trois Rivières CMA	160.1	154.8	3.5	141.4	144.9	-2.4
Montreal CMA	13,157.5	11,994.7	9.7	12,406.2	11,345.6	9.3
Gatineau CMA	980.9	912.0	7.6	919.0	885.4	3.8
Quebec CMA	1,752.1	1,769.2	-1.0	1,656.9	1,674.2	-1.0
Saguenay CMA	258.8	236.2	9.6	244.1	222.9	9.5
Saint John	331.6	363.8	-8.8	299.6	339.7	-11.8
Halifax-Dartmouth	1,560.7	1,497.4	4.2	1,507.5	1,449.8	4.0
Newfoundland & Labrador	1,056.9	949.8	11.3	996.9	911.3	9.4
<b>Canada</b>	<b>159,506.4</b>	<b>156,136.5</b>	<b>2.2</b>	<b>151,549.7</b>	<b>148,992.7</b>	<b>1.7</b>

\* in millions of dollars

<sup>†</sup>Detailed data for the Toronto Real Estate Board (TREB) market area can be found at [http://www.torontorealestateboard.com/consumer\\_info/market\\_news/index.htm](http://www.torontorealestateboard.com/consumer_info/market_news/index.htm)

<sup>1</sup> Total = Residential + Non-residential

**Source:** The Canadian Real Estate Association

**Note:** Due to changes in local market boundaries and data collection in the province of Quebec, local market and provincial totals for Quebec and Canada after 2002 are not directly comparable with earlier years.

**Sales Activity over MLS® Systems of Select Canadian  
Real Estate Boards & Associations  
Annual**

Sales Activity	Total <sup>1</sup>			Residential		
	2010	2009	percentage change	2010	2009	percentage change
Fraser Valley	14,970	16,804	-10.9	13,977	15,660	-10.7
Vancouver	31,871	36,876	-13.6	31,144	36,257	-14.1
Victoria	6,546	8,096	-19.1	6,169	7,660	-19.5
Calgary	22,073	25,995	-15.1	20,996	24,880	-15.6
Edmonton	18,523	21,427	-13.6	16,403	19,139	-14.3
Regina	3,709	3,818	-2.9	3,581	3,704	-3.3
Saskatoon	4,741	5,054	-6.2	3,574	3,834	-6.8
Winnipeg	12,238	12,185	0.4	11,572	11,509	0.5
Hamilton-Burlington	13,493	13,219	2.1	12,934	12,680	2.0
Kitchener-Waterloo	7,221	6,983	3.4	6,772	6,580	2.9
London and St Thomas	8,842	8,663	2.1	8,389	8,314	0.9
Ottawa	15,078	15,412	-2.2	14,586	14,923	-2.3
St. Catharines	3,091	2,942	5.1	2,940	2,808	4.7
Sudbury	2,520	2,217	13.7	2,244	1,977	13.5
Thunder Bay	2,398	2,272	5.5	2,146	2,041	5.1
Toronto <sup>†</sup>	88,214	89,255	-1.2	88,214	89,255	-1.2
Windsor-Essex	5,280	4,959	6.5	4,893	4,661	5.0
Trois Rivières CMA	1,024	1,110	-7.7	934	1,035	-9.8
Montreal CMA	43,995	43,198	1.8	42,347	41,754	1.4
Gatineau CMA	4,557	4,570	-0.3	4,241	4,335	-2.2
Quebec CMA	7,508	8,339	-10.0	7,083	7,962	-11.0
Saguenay CMA	1,607	1,553	3.5	1,461	1,472	-0.7
Saint John	2,029	2,309	-12.1	1,751	1,986	-11.8
Halifax-Dartmouth	6,332	6,452	-1.9	5,944	6,062	-1.9
Newfoundland & Labrador	4,734	4,858	-2.6	4,236	4,416	-4.1
<b>Canada</b>	<b>478,704</b>	<b>495,001</b>	<b>-3.3</b>	<b>447,010</b>	<b>465,068</b>	<b>-3.9</b>

<sup>†</sup>Detailed data for the Toronto Real Estate Board (TREB) market area can be found at [http://www.torontorealestateboard.com/consumer\\_info/market\\_news/index.htm](http://www.torontorealestateboard.com/consumer_info/market_news/index.htm)

<sup>1</sup> Total = Residential + Non-residential

**Source:** The Canadian Real Estate Association

**Note:** Due to changes in local market boundaries and data collection in the province of Quebec, local market and provincial totals for Quebec and Canada after 2002 are not directly comparable with earlier years.

**New Listings over MLS® Systems of Select Canadian  
Real Estate Boards & Associations  
Annual**

New Listings	Total <sup>1</sup>			Residential		
	2010	2009	percentage change	2010	2009	percentage change
Fraser Valley	31,445	30,226	4.0	28,146	26,433	6.5
Vancouver	62,908	57,607	9.2	59,818	54,828	9.1
Victoria	14,803	13,333	11.0	13,250	11,745	12.8
Calgary	51,622	46,821	10.3	46,278	41,640	11.1
Edmonton	41,907	39,040	7.3	33,131	30,696	7.9
Regina	6,621	6,697	-1.1	6,146	6,219	-1.2
Saskatoon	10,529	10,293	2.3	6,756	6,463	4.5
Winnipeg	17,867	17,344	3.0	15,975	15,478	3.2
Hamilton-Burlington	22,144	19,656	12.7	20,200	17,796	13.5
Kitchener-Waterloo	12,760	12,282	3.9	10,967	10,387	5.6
London and St Thomas	18,788	17,347	8.3	16,171	14,795	9.3
Ottawa	26,665	24,069	10.8	25,061	22,290	12.4
St. Catharines	6,983	6,687	4.4	5,826	5,524	5.5
Sudbury	5,945	5,550	7.1	4,673	4,307	8.5
Thunder Bay	3,623	3,898	-7.1	2,989	3,193	-6.4
Toronto <sup>†</sup>	154,167	136,096	13.3	154,167	136,096	13.3
Windsor-Essex	12,384	12,157	1.9	10,058	10,133	-0.7
Trois Rivières CMA	1,959	1,682	16.5	1,663	1,407	18.2
Montreal CMA	77,682	74,541	4.2	72,167	69,380	4.0
Gatineau CMA	7,616	8,307	-8.3	6,872	7,534	-8.8
Quebec CMA	12,253	11,854	3.4	11,168	10,685	4.5
Saguenay CMA	2,696	2,692	0.1	2,290	2,347	-2.4
Saint John	5,529	5,890	-6.1	3,888	4,289	-9.3
Halifax-Dartmouth	11,822	12,010	-1.6	10,160	10,516	-3.4
Newfoundland & Labrador	10,629	9,331	13.9	8,451	7,427	13.8
<b>Canada</b>	<b>984,067</b>	<b>919,245</b>	<b>7.1</b>	<b>853,489</b>	<b>794,026</b>	<b>7.5</b>

<sup>†</sup>Detailed data for the Toronto Real Estate Board (TREB) market area can be found at [http://www.torontorealestateboard.com/consumer\\_info/market\\_news/index.htm](http://www.torontorealestateboard.com/consumer_info/market_news/index.htm)

<sup>1</sup> Total = Residential + Non-residential

**Source:** The Canadian Real Estate Association

**Note:** Due to changes in local market boundaries and data collection in the province of Quebec, local market and provincial totals for Quebec and Canada after 2002 are not directly comparable with earlier years.

**Average Sale Price over MLS® Systems of Select Canadian  
Real Estate Boards & Associations  
Annual**

Average Price*	Total <sup>1</sup>			Residential		
	2010	2009	percentage change	2010	2009	percentage change
Fraser Valley	445,078	417,030	6.7	451,221	425,796	6.0
Vancouver	673,547	590,636	14.0	675,853	592,441	14.1
Victoria	494,881	466,370	6.1	504,561	476,137	6.0
Calgary	413,176	398,072	3.8	398,764	385,882	3.3
Edmonton	334,848	326,131	2.7	328,803	320,378	2.6
Regina	259,433	247,010	5.0	258,023	244,088	5.7
Saskatoon	285,674	269,943	5.8	296,293	278,895	6.2
Winnipeg	223,234	202,606	10.2	228,706	207,342	10.3
Hamilton-Burlington	313,764	294,083	6.7	311,683	290,946	7.1
Kitchener-Waterloo	293,552	273,806	7.2	289,041	269,552	7.2
London and St Thomas	232,311	217,720	6.7	228,114	214,510	6.3
Ottawa	322,422	299,312	7.7	328,439	304,801	7.8
St. Catharines	243,728	229,377	6.3	237,376	225,421	5.3
Sudbury	211,264	191,866	10.1	221,699	200,947	10.3
Thunder Bay	140,084	134,885	3.9	144,034	138,090	4.3
Toronto <sup>†</sup>	432,264	396,154	9.1	432,264	396,154	9.1
Windsor-Essex	163,016	159,240	2.4	159,347	153,691	3.7
Trois Rivières CMA	n/a	n/a	-	151,937	142,048	7.0
Montreal CMA	n/a	n/a	-	297,621	274,837	8.3
Gatineau CMA	n/a	n/a	-	218,646	206,005	6.1
Quebec CMA	n/a	n/a	-	237,240	212,203	11.8
Saguenay CMA	n/a	n/a	-	168,224	151,911	10.7
Saint John	163,418	157,542	3.7	171,104	171,027	0.0
Halifax-Dartmouth	246,482	232,077	6.2	253,610	239,158	6.0
Newfoundland & Labrador	223,251	195,520	14.2	235,341	206,374	14.0
<b>Canada</b>	<b>333,205</b>	<b>315,427</b>	<b>5.6</b>	<b>339,030</b>	<b>320,367</b>	<b>5.8</b>

\* Weighted average price for Quebec residential markets (provided by Québec Federation of Real Estate Boards). Information on Quebec residential market weighted average price calculations can be found at:

<http://www.fciq.ca/immobilier-economiste.php>

<sup>†</sup>Detailed data for the Toronto Real Estate Board (TREB) market area can be found at

[http://www.torontorealestateboard.com/consumer\\_info/market\\_news/index.htm](http://www.torontorealestateboard.com/consumer_info/market_news/index.htm)

<sup>1</sup> Total = Residential + Non-residential

**Source:** The Canadian Real Estate Association

**Note:** Due to changes in local market boundaries and data collection in the province of Quebec, local market and provincial totals for Quebec and Canada after 2002 are not directly comparable with earlier years.

**Sales as a Percentage of New Listings over MLS® Systems of  
Select Canadian Real Estate Boards & Associations  
Annual**

Sales as a Percentage of New Listings	Total <sup>1</sup>			Residential		
	2010	2009	change	2010	2009	change
Fraser Valley	47.6	55.6	-8.0	49.7	59.2	-9.5
Vancouver	50.7	64.0	-13.3	52.1	66.1	-14.0
Victoria	44.2	60.7	-16.5	46.6	65.2	-18.6
Calgary	42.8	55.5	-12.7	45.4	59.8	-14.4
Edmonton	44.2	54.9	-10.7	49.5	62.4	-12.9
Regina	56.0	57.0	-1.0	58.3	59.6	-1.3
Saskatoon	45.0	49.1	-4.1	52.9	59.3	-6.4
Winnipeg	68.5	70.3	-1.8	72.4	74.4	-2.0
Hamilton-Burlington	60.9	67.3	-6.4	64.0	71.3	-7.3
Kitchener-Waterloo	56.6	56.9	-0.3	61.7	63.3	-1.6
London and St Thomas	47.1	49.9	-2.8	51.9	56.2	-4.3
Ottawa	56.5	64.0	-7.5	58.2	66.9	-8.7
St. Catharines	44.3	44.0	0.3	50.5	50.8	-0.3
Sudbury	42.4	39.9	2.5	48.0	45.9	2.1
Thunder Bay	66.2	58.3	7.9	71.8	63.9	7.9
Toronto <sup>†</sup>	57.2	65.6	-8.4	57.2	65.6	-8.4
Windsor-Essex	42.6	40.8	1.8	48.6	46.0	2.6
Trois Rivières CMA	52.3	66.0	-13.7	56.2	73.6	-17.4
Montreal CMA	56.6	58.0	-1.4	58.7	60.2	-1.5
Gatineau CMA	59.8	55.0	4.8	61.7	57.5	4.2
Quebec CMA	61.3	70.3	-9.0	63.4	74.5	-11.1
Saguenay CMA	59.6	57.7	1.9	63.8	62.7	1.1
Saint John	36.7	39.2	-2.5	45.0	46.3	-1.3
Halifax-Dartmouth	53.6	53.7	-0.1	58.5	57.6	0.9
Newfoundland & Labrador	44.5	52.1	-7.6	50.1	59.5	-9.4
<b>Canada</b>	<b>48.6</b>	<b>53.8</b>	<b>-5.2</b>	<b>52.4</b>	<b>58.6</b>	<b>-6.2</b>

<sup>†</sup>Detailed data for the Toronto Real Estate Board (TREB) market area can be found at  
[http://www.torontorealestateboard.com/consumer\\_info/market\\_news/index.htm](http://www.torontorealestateboard.com/consumer_info/market_news/index.htm)

<sup>1</sup> Total = Residential + Non-residential

**Source:** The Canadian Real Estate Association

**Note:** Due to changes in local market boundaries and data collection in the province of Quebec, local market and provincial totals for Quebec and Canada after 2002 are not directly comparable with earlier years.

**Dollar Volume & Sales Activity over MLS® Systems of Canadian Real Estate Boards & Associations  
December 2010**

Dollar Volume*	Total <sup>1</sup>						Residential					
	s.a. <sup>2</sup>			nsa <sup>3</sup>			s.a. <sup>2</sup>			nsa <sup>3</sup>		
	Dec 2010	Nov 2010	monthly percentage change	Dec 2010	Dec 2009	year-over-year percentage change	Dec 2010	Nov 2010	monthly percentage change	Dec 2010	Dec 2009	year-over-year percentage change
British Columbia	3,381.7	3,538.3	-4.4	2,358.7	3,035.1	-22.3	3,227.0	3,388.2	-4.8	2,231.1	2,828.1	-21.1
Alberta	1,717.7	1,661.1	3.4	1,069.9	1,186.7	-9.8	1,525.4	1,488.9	2.5	955.9	1,064.4	-10.2
Saskatchewan	273.0	289.1	-5.6	164.4	161.8	1.6	233.3	254.0	-8.2	137.2	141.9	-3.3
Manitoba	290.1	262.9	10.3	165.9	136.2	21.8	284.0	257.1	10.5	159.4	128.9	23.6
Ontario	5,776.4	5,774.3	0.0	3,415.1	3,843.9	-11.2	5,622.0	5,619.3	0.0	3,280.5	3,709.1	-11.6
Quebec	1,764.1	1,824.3	-3.3	1,256.2	1,328.2	-5.4	1,659.1	1,677.4	-1.1	1,148.6	1,206.4	-4.8
New Brunswick	83.6	96.7	-13.5	49.9	64.3	-22.3	77.7	89.1	-12.8	45.6	57.8	-21.2
Nova Scotia	201.7	195.5	3.2	119.4	111.7	6.9	188.3	179.1	5.1	109.2	103.7	5.3
Prince Edward Island	22.5	23.8	-5.4	22.8	16.6	37.0	19.7	18.6	5.9	18.3	14.8	23.6
Newfoundland & Labrador	79.3	74.9	5.8	81.2	97.1	-16.4	75.3	71.9	4.8	76.1	92.2	-17.4
Northwest Territories	4.5	1.6	185.8	4.5	6.3	-28.5	5.9	3.2	84.1	3.8	2.2	72.5
Yukon	9.1	7.4	22.9	7.0	2.9	141.5	8.4	7.5	11.5	5.4	2.8	94.2
<b>Canada</b>	<b>13,603.5</b>	<b>13,750.0</b>	<b>-1.1</b>	<b>8,715.0</b>	<b>9,990.7</b>	<b>-12.8</b>	<b>12,926.0</b>	<b>13,054.3</b>	<b>-1.0</b>	<b>8,171.0</b>	<b>9,352.4</b>	<b>-12.6</b>

Sales Activity	Total <sup>1</sup>						Residential					
	s.a. <sup>2</sup>			nsa <sup>3</sup>			s.a. <sup>2</sup>			nsa <sup>3</sup>		
	Dec 2010	Nov 2010	monthly percentage change	Dec 2010	Dec 2009	year-over-year percentage change	Dec 2010	Nov 2010	monthly percentage change	Dec 2010	Dec 2009	year-over-year percentage change
British Columbia	6,607	6,837	-3.4	4,635	6,305	-26.5	6,225	6,365	-2.2	4,258	5,703	-25.3
Alberta	4,915	4,664	5.4	3,025	3,316	-8.8	4,383	4,222	3.8	2,795	3,026	-7.6
Saskatchewan	1,088	1,175	-7.4	665	690	-3.6	923	1,007	-8.3	567	594	-4.5
Manitoba	1,242	1,158	7.3	727	699	4.0	1,193	1,102	8.3	685	639	7.2
Ontario	17,021	17,182	-0.9	10,131	11,834	-14.4	16,210	16,383	-1.1	9,557	11,192	-14.6
Quebec	7,199	7,211	-0.2	4,970	5,524	-10.0	6,681	6,747	-1.0	4,568	5,115	-10.7
New Brunswick	589	641	-8.1	379	454	-16.5	504	566	-11.0	319	389	-18.0
Nova Scotia	1,009	996	1.3	617	597	3.4	851	850	0.1	515	518	-0.6
Prince Edward Island	182	171	6.4	177	140	26.4	135	123	9.8	127	113	12.4
Newfoundland & Labrador	332	337	-1.5	328	452	-27.4	302	300	0.7	298	399	-25.3
Northwest Territories	20	4	400.0	11	10	10.0	19	5	280.0	10	8	25.0
Yukon	28	29	-3.4	18	13	38.5	26	27	-3.7	16	12	33.3
<b>Canada</b>	<b>40,232</b>	<b>40,405</b>	<b>-0.4</b>	<b>25,683</b>	<b>30,034</b>	<b>-14.5</b>	<b>37,452</b>	<b>37,697</b>	<b>-0.6</b>	<b>23,715</b>	<b>27,708</b>	<b>-14.4</b>

\* in millions of dollars

<sup>1</sup> Total = Residential + Non-residential

<sup>2</sup> Seasonally adjusted

<sup>3</sup> Not seasonally adjusted

**Source:** The Canadian Real Estate Association

**Note:** Due to changes in local market boundaries and data collection in the province of Quebec, local market and provincial totals for Quebec and Canada after 2002 are not directly comparable with earlier years.

**New Listings and Average Sale Price over MLS® Systems of Canadian Real Estate Boards & Associations  
December 2010**

New Listings	Total <sup>1</sup>						Residential					
	s.a. <sup>2</sup>			nsa <sup>3</sup>			s.a. <sup>2</sup>			nsa <sup>3</sup>		
	Dec 2010	Nov 2010	monthly percentage change	Dec 2010	Dec 2009	year-over-year percentage change	Dec 2010	Nov 2010	monthly percentage change	Dec 2010	Dec 2009	year-over-year percentage change
British Columbia	14,128	13,733	2.9	6,226	7,546	-17.5	12,336	12,015	2.7	5,139	6,305	-18.5
Alberta	10,379	10,089	2.9	4,544	4,714	-3.6	8,668	8,442	2.7	3,783	3,947	-4.2
Saskatchewan	2,247	2,317	-3.0	1,003	1,056	-5.0	1,730	1,767	-2.1	764	784	-2.6
Manitoba	1,793	1,760	1.9	686	647	6.0	1,575	1,587	-0.8	579	566	2.3
Ontario	29,988	30,967	-3.2	12,645	14,627	-13.6	26,696	27,382	-2.5	10,889	12,585	-13.5
Quebec	14,438	14,146	2.1	8,727	8,576	1.8	12,775	12,498	2.2	7,570	7,337	3.2
New Brunswick	1,563	1,621	-3.6	720	708	1.7	1,195	1,192	0.3	552	568	-2.8
Nova Scotia	2,308	2,064	11.8	1,031	861	19.7	1,848	1,558	18.6	755	637	18.5
Prince Edward Island	375	365	2.7	146	166	-12.0	202	257	-21.4	88	121	-27.3
Newfoundland & Labrador	961	891	7.9	433	291	48.8	778	700	11.1	351	240	46.3
Northwest Territories	10	12	-16.7	3	6	-50.0	9	11	-18.2	3	6	-50.0
Yukon	40	33	21.2	14	4	250.0	37	32	15.6	13	4	225.0
<b>Canada</b>	<b>78,230</b>	<b>77,998</b>	<b>0.3</b>	<b>36,178</b>	<b>39,202</b>	<b>-7.7</b>	<b>67,849</b>	<b>67,441</b>	<b>0.6</b>	<b>30,486</b>	<b>33,100</b>	<b>-7.9</b>

Average Price*	Total <sup>1</sup>						Residential					
	s.a. <sup>2</sup>			nsa <sup>3</sup>			s.a. <sup>2</sup>			nsa <sup>3</sup>		
	Dec 2010	Nov 2010	monthly percentage change	Dec 2010	Dec 2009	year-over-year percentage change	Dec 2010	Nov 2010	monthly percentage change	Dec 2010	Dec 2009	year-over-year percentage change
British Columbia	511,831	517,527	-1.1	508,883	481,372	5.7	518,386	532,323	-2.6	523,990	495,903	5.7
Alberta	349,478	356,159	-1.9	353,688	357,856	-1.2	348,028	352,651	-1.3	341,999	351,737	-2.8
Saskatchewan	250,903	246,048	2.0	247,249	234,483	5.4	252,738	252,221	0.2	241,971	238,968	1.3
Manitoba	233,562	227,011	2.9	228,244	194,851	17.1	238,023	233,277	2.0	232,648	201,722	15.3
Ontario	339,367	336,064	1.0	337,089	324,820	3.8	346,821	342,995	1.1	343,257	331,410	3.6
Quebec	n/a	n/a	-	n/a	n/a	-	n/a	n/a	-	256,106	238,561	7.4
New Brunswick	141,972	150,878	-5.9	131,755	141,568	-6.9	154,182	157,507	-2.1	142,813	148,559	-3.9
Nova Scotia	199,889	196,302	1.8	193,521	187,090	3.4	221,227	210,703	5.0	211,971	200,194	5.9
Prince Edward Island	123,761	139,231	-11.1	128,751	118,794	8.4	146,167	151,449	-3.5	144,327	131,227	10.0
Newfoundland & Labrador	238,835	222,393	7.4	247,616	214,844	15.3	249,499	239,570	4.1	255,517	231,107	10.6
Northwest Territories	224,259	392,375	-42.8	407,743	627,178	-35.0	309,138	638,008	-51.5	375,218	271,963	38.0
Yukon	324,186	254,738	27.3	388,954	223,000	74.4	321,769	277,795	15.8	336,698	231,167	45.7
<b>Canada</b>	<b>338,127</b>	<b>340,303</b>	<b>-0.6</b>	<b>339,329</b>	<b>332,647</b>	<b>2.0</b>	<b>345,135</b>	<b>346,294</b>	<b>-0.3</b>	<b>344,551</b>	<b>337,534</b>	<b>2.1</b>

\* Provincial weighted average price for Quebec (provided by Québec Federation of Real Estate Boards); does not affect weighted and unweighted national average price calculations. Information on Quebec's weighted average price calculation can be found at: <http://www.fcq.ca/immobilier-economiste.php>

<sup>1</sup> Total = Residential + Non-residential

<sup>2</sup> Seasonally adjusted

<sup>3</sup> Not seasonally adjusted

**Source:** The Canadian Real Estate Association

**Note:** Due to changes in local market boundaries and data collection in the province of Quebec, local market and provincial totals for Quebec and Canada after 2002 are not directly comparable with earlier years.

**Months of Inventory and Sales as a Percentage of New Listings over MLS® Systems of Canadian Real Estate Boards & Associations  
December 2010**

Sales as a Percentage of New Listings	Total <sup>1</sup>						Residential					
	s.a. <sup>2</sup>			nsa <sup>3</sup>			s.a. <sup>2</sup>			nsa <sup>3</sup>		
	Dec 2010	Nov 2010	monthly change	Dec 2010	Dec 2009	year-over-year change	Dec 2010	Nov 2010	monthly change	Dec 2010	Dec 2009	year-over-year change
British Columbia	46.8	49.8	-3.0	74.4	83.6	-9.2	50.5	53.0	-2.5	82.9	90.5	-7.6
Alberta	47.4	46.2	1.2	66.6	70.3	-3.7	50.6	50.0	0.6	73.9	76.7	-2.8
Saskatchewan	48.4	50.7	-2.3	66.3	65.3	1.0	53.4	57.0	-3.6	74.2	75.8	-1.6
Manitoba	69.3	65.8	3.5	106.0	108.0	-2.0	75.7	69.4	6.3	118.3	112.9	5.4
Ontario	56.8	55.5	1.3	80.1	80.9	-0.8	60.7	59.8	0.9	87.8	88.9	-1.1
Quebec	49.9	51.0	-1.1	56.9	64.4	-7.5	52.3	54.0	-1.7	60.3	69.7	-9.4
New Brunswick	37.7	39.5	-1.8	52.6	64.1	-11.5	42.2	47.5	-5.3	57.8	68.5	-10.7
Nova Scotia	43.7	48.3	-4.6	59.8	69.3	-9.5	46.0	54.6	-8.6	68.2	81.3	-13.1
Prince Edward Island	48.5	46.8	1.7	121.2	84.3	36.9	66.8	47.9	18.9	144.3	93.4	50.9
Newfoundland & Labrador	34.5	37.8	-3.3	75.8	155.3	-79.5	38.8	42.9	-4.1	84.9	166.3	-81.4
Northwest Territories	200.0	33.3	166.7	366.7	166.7	200.0	211.1	45.5	165.6	333.3	133.3	200.0
Yukon	70.0	87.9	-17.9	128.6	325.0	-196.4	70.3	84.4	-14.1	123.1	300.0	-176.9
<b>Canada</b>	<b>51.4</b>	<b>51.8</b>	<b>-0.4</b>	<b>71.0</b>	<b>76.6</b>	<b>-5.6</b>	<b>55.2</b>	<b>55.9</b>	<b>-0.7</b>	<b>77.8</b>	<b>83.7</b>	<b>-5.9</b>

Months of Inventory	Total <sup>1</sup>						Residential					
	s.a. <sup>2</sup>			nsa <sup>3</sup>			s.a. <sup>2</sup>			nsa <sup>3</sup>		
	Dec 2010	Nov 2010	monthly change	Dec 2010	Dec 2009	year-over-year change	Dec 2010	Nov 2010	monthly change	Dec 2010	Dec 2009	year-over-year change
British Columbia	7.4	6.9	0.5	11.2	7.4	3.8	7.8	7.5	0.3	8.9	5.8	3.1
Alberta	5.5	5.8	-0.3	9.3	7.1	2.2	6.1	6.4	-0.3	7.2	5.4	1.8
Saskatchewan	5.1	4.8	0.3	10.2	9.2	1.0	6.0	5.6	0.4	7.7	6.5	1.2
Manitoba	2.4	2.6	-0.2	3.9	3.7	0.2	2.5	2.7	-0.2	3.1	3.0	0.1
Ontario	3.6	3.7	-0.1	6.0	5.0	1.0	3.8	3.9	-0.1	4.7	3.8	0.9
Quebec	7.6	7.5	0.1	12.2	10.2	2.0	8.2	8.0	0.2	10.7	8.7	2.0
New Brunswick	8.9	8.0	0.9	17.0	13.8	3.2	10.4	9.1	1.3	12.4	9.5	2.9
Nova Scotia	7.4	7.4	0.0	16.8	16.7	0.1	8.8	8.6	0.2	11.4	10.8	0.6
Prince Edward Island	8.3	8.9	-0.6	13.7	16.6	-2.9	11.2	12.4	-1.2	8.5	9.5	-1.0
Newfoundland & Labrador	7.2	7.0	0.2	8.1	4.4	3.7	7.9	7.9	0.0	5.9	3.1	2.8
Northwest Territories	1.6	6.8	-5.2	2.5	2.2	0.3	1.7	5.4	-3.7	2.3	2.0	0.3
Yukon	3.8	3.3	0.5	5.1	5.3	-0.2	4.1	3.6	0.5	4.3	4.7	-0.4
<b>Canada</b>	<b>5.4</b>	<b>5.4</b>	<b>0.0</b>	<b>9.1</b>	<b>7.1</b>	<b>2.0</b>	<b>5.8</b>	<b>5.8</b>	<b>0.0</b>	<b>7.2</b>	<b>5.6</b>	<b>1.6</b>

<sup>1</sup> Total = Residential + Non-residential

<sup>2</sup> Seasonally adjusted

<sup>3</sup> Not seasonally adjusted

Source: The Canadian Real Estate Association



**Dollar Volume & Sales Activity over MLS® Systems of Canadian Real Estate Boards & Associations**  
**Annual**

Dollar Volume*	Total <sup>1</sup>			Residential		
	2010	2009	percentage change	2010	2009	percentage change
British Columbia	39,490.9	41,114.8	-3.9	37,706.5	39,599.7	-4.8
Alberta	19,472.2	21,645.8	-10.0	17,517.4	19,669.2	-10.9
Saskatchewan	3,047.8	2,996.0	1.7	2,633.8	2,583.8	1.9
Manitoba	3,026.3	2,742.1	10.4	2,924.1	2,634.8	11.0
Ontario	68,975.2	64,086.6	7.6	66,940.0	62,348.7	7.4
Quebec	20,669.9	18,943.5	9.1	19,347.6	17,830.9	8.5
New Brunswick	1,133.7	1,155.3	-1.9	1,053.8	1,084.8	-2.9
Nova Scotia	2,216.3	2,101.5	5.5	2,069.3	1,971.0	5.0
Prince Edward Island	268.8	237.7	13.1	218.9	205.0	6.7
Newfoundland & Labrador	1,056.9	949.8	11.3	996.9	911.3	9.4
Northwest Territories	59.1	79.4	-25.6	54.9	70.1	-21.7
Yukon	89.5	83.9	6.6	86.5	83.2	4.0
<b>Canada</b>	<b>159,506.4</b>	<b>156,136.5</b>	<b>2.2</b>	<b>151,549.7</b>	<b>148,992.7</b>	<b>1.7</b>

Sales Activity	Total <sup>1</sup>			Residential		
	2010	2009	percentage change	2010	2009	percentage change
British Columbia	80,326	90,377	-11.1	74,640	85,028	-12.2
Alberta	54,302	62,345	-12.9	49,723	57,543	-13.6
Saskatchewan	12,636	12,870	-1.8	10,872	11,095	-2.0
Manitoba	13,929	13,881	0.3	13,164	13,086	0.6
Ontario	205,407	205,051	0.2	195,591	195,840	-0.1
Quebec	85,764	83,963	2.1	80,126	79,111	1.3
New Brunswick	7,706	7,964	-3.2	6,702	7,003	-4.3
Nova Scotia	11,442	11,357	0.7	10,036	10,021	0.1
Prince Edward Island	2,004	1,795	11.6	1,487	1,404	5.9
Newfoundland & Labrador	4,734	4,858	-2.6	4,236	4,416	-4.1
Northwest Territories	156	226	-31.0	146	213	-31.5
Yukon	298	314	-5.1	287	308	-6.8
<b>Canada</b>	<b>478,704</b>	<b>495,001</b>	<b>-3.3</b>	<b>447,010</b>	<b>465,068</b>	<b>-3.9</b>

\* in millions of dollars

<sup>1</sup> Total = Residential + Non-residential

**Source:** The Canadian Real Estate Association

**Note:** Due to changes in local market boundaries and data collection in the province of Quebec, local market

## New Listings and Average Sale Price over MLS® Systems of Canadian Real Estate Boards & Associations

### Annual

New Listings	Total <sup>1</sup>			Residential		
	2010	2009	percentage change	2010	2009	percentage change
British Columbia	185,130	173,118	6.9	161,104	149,044	8.1
Alberta	130,689	120,735	8.2	110,156	101,067	9.0
Saskatchewan	26,852	26,117	2.8	20,621	19,948	3.4
Manitoba	20,827	20,782	0.2	18,545	18,596	-0.3
Ontario	393,129	360,507	9.0	350,278	319,969	9.5
Quebec	167,870	160,587	4.5	147,843	141,478	4.5
New Brunswick	18,452	18,789	-1.8	13,933	14,229	-2.1
Nova Scotia	25,384	24,762	2.5	19,088	19,014	0.4
Prince Edward Island	4,542	3,878	17.1	2,938	2,652	10.8
Newfoundland & Labrador	10,629	9,331	13.9	8,451	7,427	13.8
Northwest Territories	181	228	-20.6	172	215	-20.0
Yukon	382	411	-7.1	360	387	-7.0
<b>Canada</b>	<b>984,067</b>	<b>919,245</b>	<b>7.1</b>	<b>853,489</b>	<b>794,026</b>	<b>7.5</b>

Average Price*	Total <sup>1</sup>			Residential		
	2010	2009	percentage change	2010	2009	percentage change
British Columbia	491,633	454,926	8.1	505,178	465,725	8.5
Alberta	358,590	347,195	3.3	352,301	341,818	3.1
Saskatchewan	241,196	232,791	3.6	242,258	232,882	4.0
Manitoba	217,268	197,541	10.0	222,132	201,343	10.3
Ontario	335,798	312,540	7.4	342,245	318,366	7.5
Quebec	n/a	n/a	-	248,697	230,243	8.0
New Brunswick	147,121	145,060	1.4	157,240	154,906	1.5
Nova Scotia	193,696	185,041	4.7	206,186	196,690	4.8
Prince Edward Island	134,115	132,428	1.3	147,196	146,044	0.8
Newfoundland & Labrador	223,251	195,520	14.2	235,341	206,374	14.0
Northwest Territories	378,830	351,502	7.8	375,796	329,154	14.2
Yukon	300,218	267,287	12.3	301,267	270,055	11.6
<b>Canada</b>	<b>333,205</b>	<b>315,427</b>	<b>5.6</b>	<b>339,030</b>	<b>320,367</b>	<b>5.8</b>

\* Provincial weighted average price for Quebec (provided by Québec Federation of Real Estate Boards); does not affect weighted and unweighted national average price calculations.  
Information on Quebec's weighted average price calculation can be found at: <http://www.fcq.ca/immobilier-economiste.php>

<sup>1</sup> Total = Residential + Non-residential

**Source:** The Canadian Real Estate Association

**Note:** Due to changes in local market boundaries and data collection in the province of Quebec, local market

**Months of Inventory and Sales as a Percentage of New Listings over  
MLS® Systems of Canadian Real Estate Boards & Associations  
Annual**

Sales as a Percentage of New Listings	Total <sup>1</sup>			Residential		
	2010	2009	change	2010	2009	change
British Columbia	43.4	52.2	-8.8	46.3	57.0	-10.7
Alberta	41.6	51.6	-10.0	45.1	56.9	-11.8
Saskatchewan	47.1	49.3	-2.2	52.7	55.6	-2.9
Manitoba	66.9	66.8	0.1	71.0	70.4	0.6
Ontario	52.2	56.9	-4.7	55.8	61.2	-5.4
Quebec	51.1	52.3	-1.2	54.2	55.9	-1.7
New Brunswick	41.8	42.4	-0.6	48.1	49.2	-1.1
Nova Scotia	45.1	45.9	-0.8	52.6	52.7	-0.1
Prince Edward Island	44.1	46.3	-2.2	50.6	52.9	-2.3
Newfoundland & Labrador	44.5	52.1	-7.6	50.1	59.5	-9.4
Northwest Territories	86.2	99.1	-12.9	84.9	99.1	-14.2
Yukon	78.0	76.4	1.6	79.7	79.6	0.1
<b>Canada</b>	<b>48.6</b>	<b>53.8</b>	<b>-5.2</b>	<b>52.4</b>	<b>58.6</b>	<b>-6.2</b>

Months of Inventory	Total <sup>1</sup>			Residential		
	2010	2009	change	2010	2009	change
British Columbia	9.8	8.1	1.7	8.0	6.4	1.6
Alberta	8.2	6.3	1.9	6.5	4.9	1.6
Saskatchewan	8.0	7.7	0.3	6.1	5.9	0.2
Manitoba	3.3	3.6	-0.3	2.6	2.9	-0.3
Ontario	4.9	4.9	0.0	4.0	4.0	0.0
Quebec	9.1	9.6	-0.5	7.8	8.2	-0.4
New Brunswick	13.1	12.5	0.6	9.1	8.6	0.5
Nova Scotia	13.2	13.5	-0.3	8.7	9.1	-0.4
Prince Edward Island	19.1	20.9	-1.8	12.3	12.9	-0.6
Newfoundland & Labrador	8.2	7.1	1.1	5.8	4.9	0.9
Northwest Territories	2.6	2.8	-0.2	2.2	2.4	-0.2
Yukon	4.6	6.6	-2.0	3.9	5.9	-2.0
<b>Canada</b>	<b>7.3</b>	<b>6.9</b>	<b>0.4</b>	<b>5.9</b>	<b>5.5</b>	<b>0.4</b>

<sup>1</sup> Total = Residential + Non-residential

**Source:** The Canadian Real Estate Association

**Note:** Due to changes in local market boundaries and data collection in the province of Quebec, local market